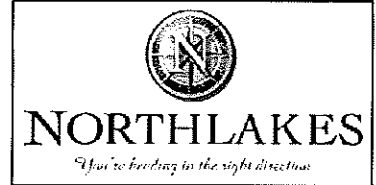


G.I.N.
M.G.A.

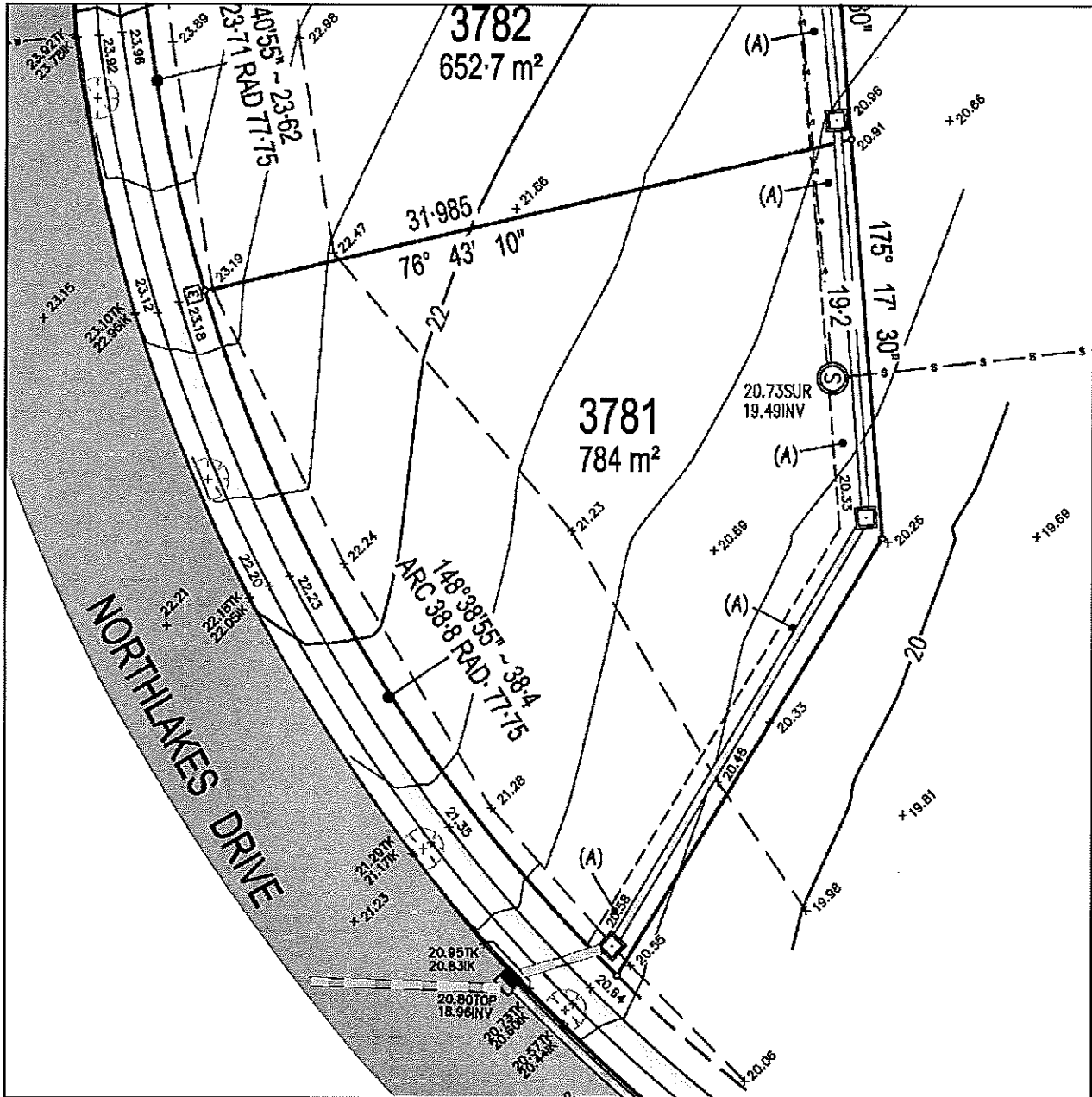
LEGEND

ALL SYMBOLS - NOT TO SCALE

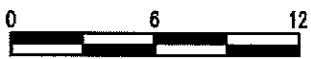
- | | |
|-----------------------|--------------------------------|
| HYDRANT | SEWER ACCESS CHAMBER |
| STOP VALVE | SEWER INSPECTION POINT |
| TELSTRA | FLUSHING POINT |
| UNDERGROUND POWER BOX | STORMWATER PIT |
| LIGHT POLE | KERB INLET PIT |
| -W-W-W- WATER | -S-S-S- SEWER |
| -T-T-T- TELSTRA | STORMWATER PIPE |
| -E-E-E- ELECTRICITY | TOP OF CONC. KERB & GUTTER |
| -G-G-G- GAS | APPROX. CENTRELINE OF PAVEMENT |



STAGE 37B



LOT 3781 DP



SCALE 1:300

- NOTES - [DATE OF SURVEY : 31/01/2008]

- SERVICES SHOWN HEREON ARE APPROXIMATE ONLY AND SHOULD BE FURTHER INVESTIGATED PRIOR TO ANY EXCAVATION OR ON-SITE CONSTRUCTION.

(A). EASEMENT TO DRAIN WATER 2 WIDE (DP).



CASHMERE MARLER & CAVANAGH PTY LTD
CONSULTING SURVEYORS

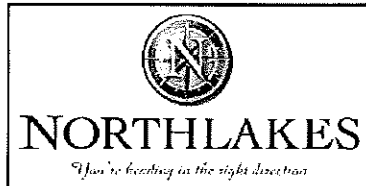
72 BELFORD STREET BROADMEADOW NSW 2292
PO BOX 176 BROADMEADOW NSW 2292
PHONE: 0249654344 FAX: 0249654322
DX 28217 HAMILTON
surveyo@cmcsurveyors.com.au



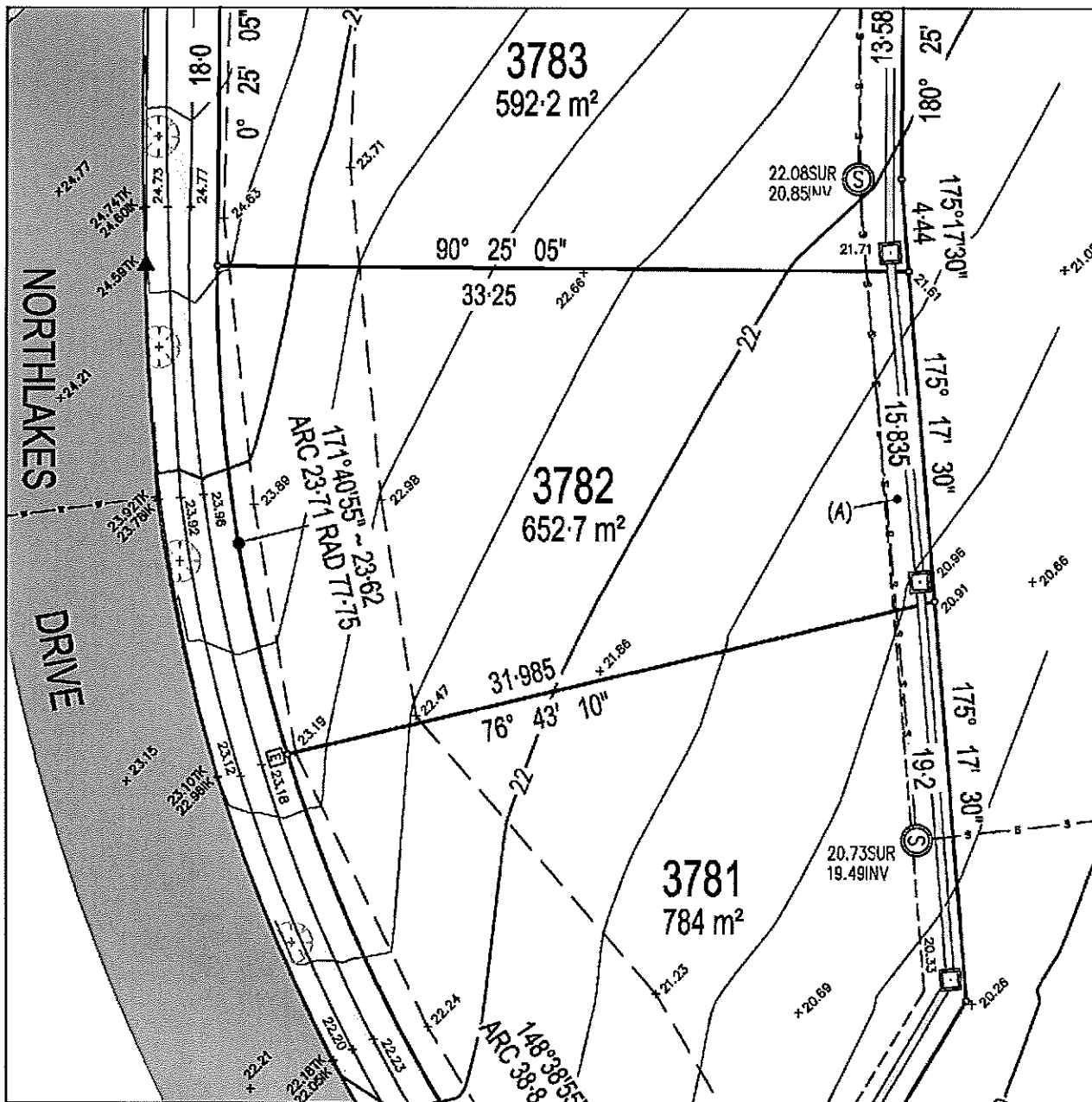
LEGEND

ALL SYMBOLS - NOT TO SCALE

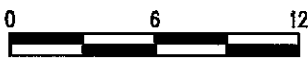
- | | | | |
|---------|-----------------------|-----------|--------------------------------|
| | HYDRANT | | SEWER ACCESS CHAMBER |
| | STOP VALVE | | SEWER INSPECTION POINT |
| | TELSTRA | | FLUSHING POINT |
| | UNDERGROUND POWER BOX | | STORMWATER PIT |
| | LIGHT POLE | | KERB INLET PIT |
| -W-W-W- | WATER | -S-S-S- | SEWER |
| -T-T-T- | TELSTRA | | STORMWATER PIPE |
| -E-E-E- | ELECTRICITY | | TOP OF CONC. KERB & GUTTER |
| -G-G-G- | GAS | - - - - - | APPROX. CENTRELINE OF PAVEMENT |



STAGE 37b



LOT 3782 DP



SCALE 1:300

- NOTES - [DATE OF SURVEY : 31/01/2008]

1. SERVICES SHOWN HEREON ARE APPROXIMATE ONLY AND SHOULD BE FURTHER INVESTIGATED PRIOR TO ANY EXCAVATION OR ON-SITE CONSTRUCTION.

(A). EASEMENT TO DRAIN WATER 2 WIDE (DP)



CASHMERE MARLER & CAVANAGH PTY LTD
CONSULTING SURVEYORS

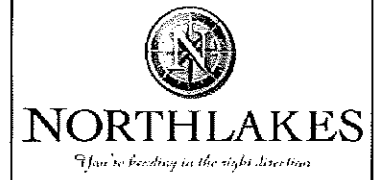
72 BELFORD STREET BROADMEADOW NSW 2292
PO BOX 178 BROADMEADOW NSW 2292
PHONE: 0249654344 FAX: 0249654322
DX 26217 HAMILTON
surveyor@cmcsurveyors.com.au



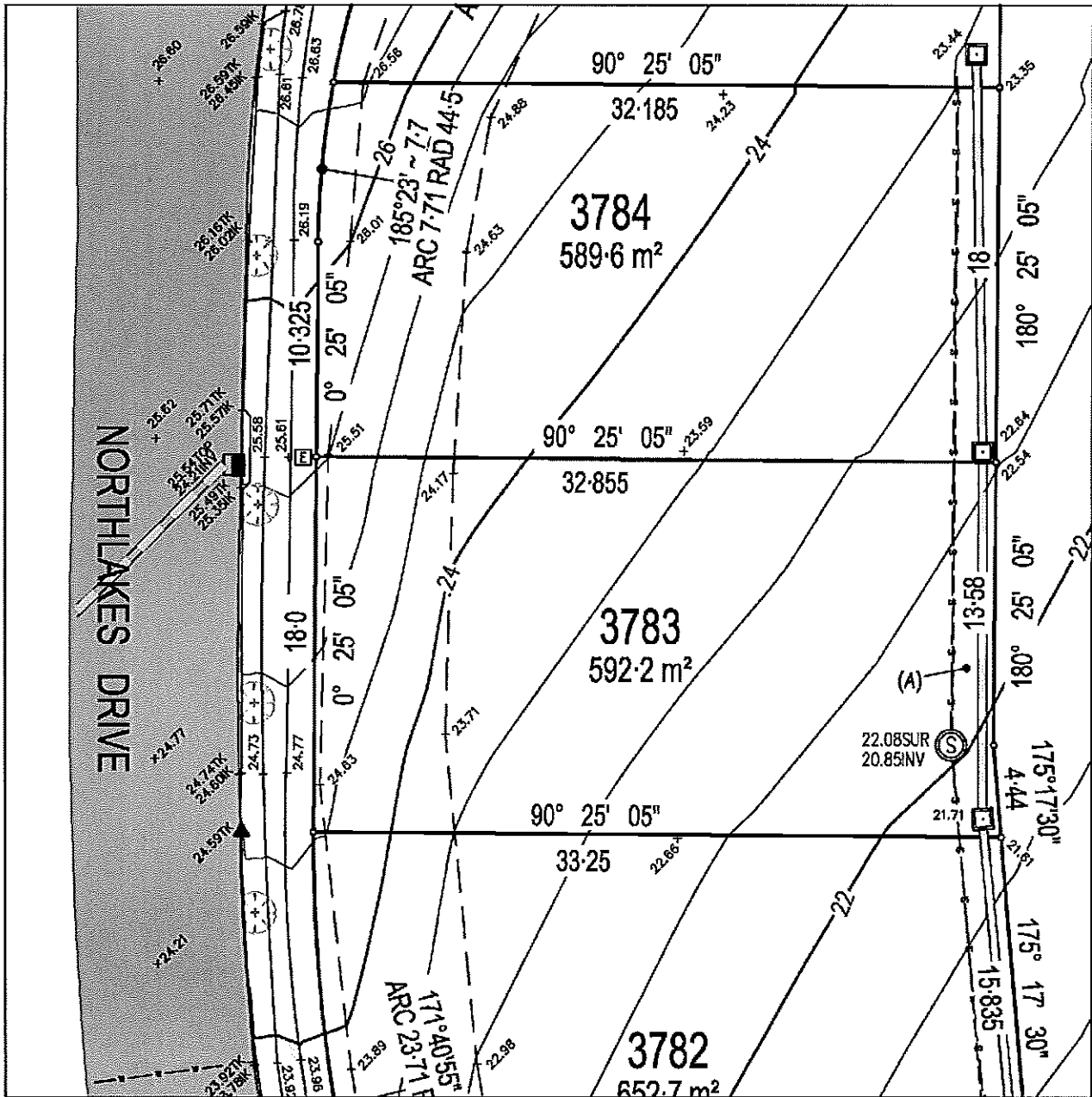
LEGEND

ALL SYMBOLS - NOT TO SCALE

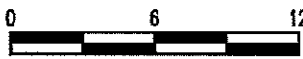
- | | | | |
|---------|-----------------------|-----------|--------------------------------|
| | HYDRANT | | SEWER ACCESS CHAMBER |
| | STOP VALVE | | SEWER INSPECTION POINT |
| | TELSTRA | | FLUSHING POINT |
| | UNDERGROUND POWER BOX | | STORMWATER PIT |
| | LIGHT POLE | | KERB INLET PIT |
| -W-W-W- | WATER | -S-S-S- | SEWER |
| -T-T-T- | TELSTRA | | STORMWATER PIPE |
| -E-E-E- | ELECTRICITY | | TOP OF CONC. KERB & GUTTER |
| -G-G-G- | GAS | - - - - - | APPROX. CENTRELINE OF PAVEMENT |



STAGE 37B



LOT 3783 DP



SCALE 1:300

- NOTES - [DATE OF SURVEY : 31/01/2008]

1. SERVICES SHOWN HEREON ARE APPROXIMATE ONLY AND SHOULD BE FURTHER INVESTIGATED PRIOR TO ANY EXCAVATION OR ON-SITE CONSTRUCTION.

(A). EASEMENT TO DRAIN WATER 2 WIDE (DP)
















CASHMERE MARLER & CAVANAGH PTY LTD
CONSULTING SURVEYORS

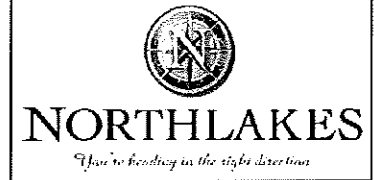
72 BELFORD STREET BROADMEADOW NSW 2282
PO BOX 176 BROADMEADOW NSW 2282
PHONE: 0249654344 FAX: 0249854322
DX 26217 HAMILTON
surveyor@cmcsurveyors.com.au

G.I.N.
M.G.A.

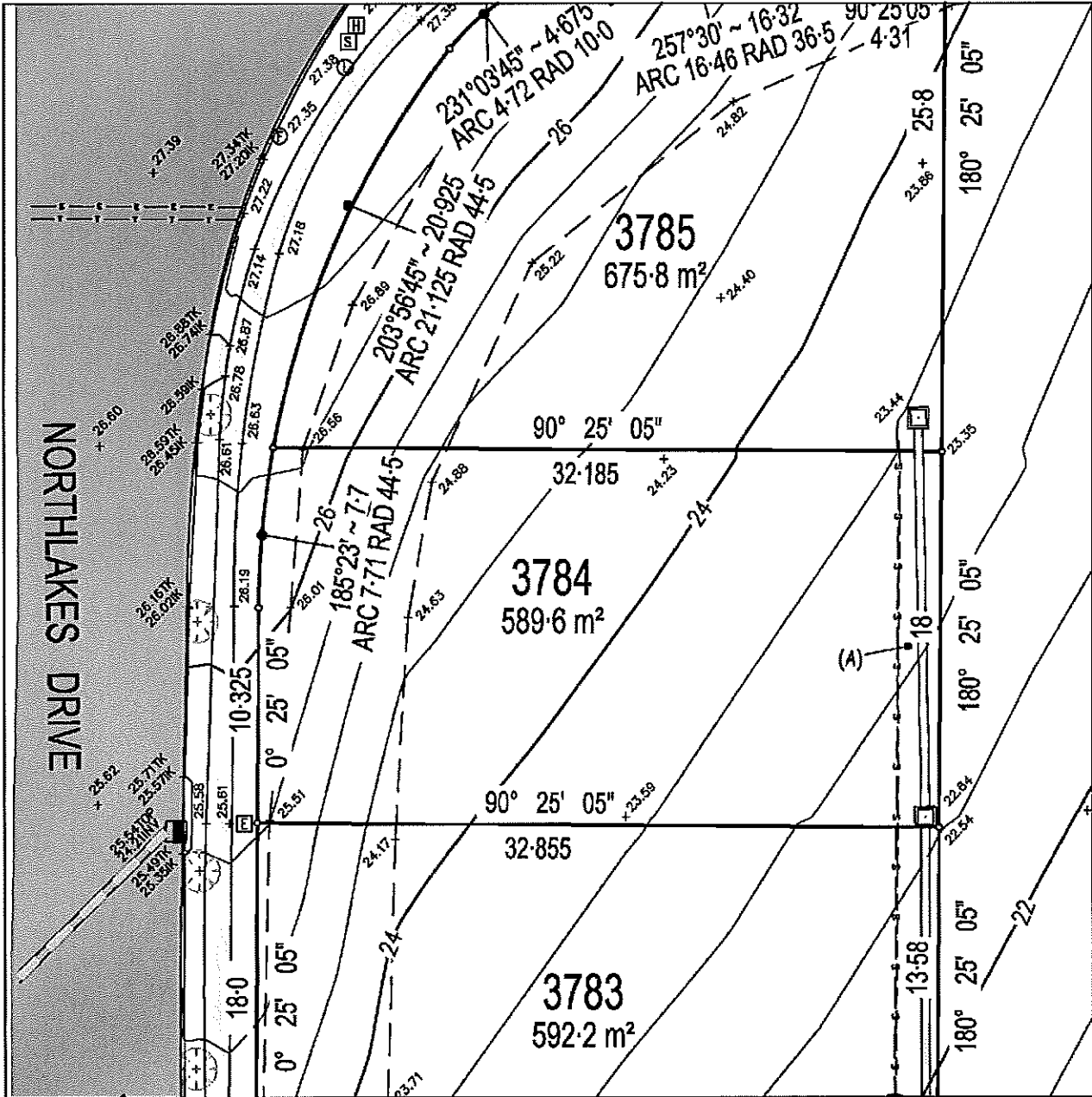
LEGEND

ALL SYMBOLS - NOT TO SCALE

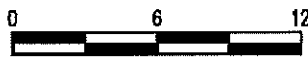
- | | |
|---|--|
|  HYDRANT |  SEWER ACCESS CHAMBER |
|  STOP VALVE |  SEWER INSPECTION POINT |
|  TELSTRA |  FLUSHING POINT |
|  UNDERGROUND POWER BOX |  STORMWATER PIT |
|  LIGHT POLE |  KERB INLET PIT |
| -W-W-W- WATER | -S-S-S- SEWER |
| -T-T-T- TELSTRA |  STORMWATER PIPE |
| -E-E-E- ELECTRICITY |  TOP OF CONC. KERB & GUTTER |
| -G-G-G- GAS |  APPROX. CENTRELINE OF PAVEMENT |



STAGE 37B



LOT 3784 DP



SCALE 1:300

- NOTES - [DATE OF SURVEY : 31/01/2008]

1. SERVICES SHOWN HEREON ARE APPROXIMATE ONLY AND SHOULD BE FURTHER INVESTIGATED PRIOR TO ANY EXCAVATION OR ON-SITE CONSTRUCTION.

(A). EASEMENT TO DRAIN WATER 2 WIDE (DP).



CASHMERE MARLER & CAVANAGH PTY LTD
CONSULTING SURVEYORS

72 BELFORD STREET BROADMEADOW NSW 2282
PO BOX 176 BROADMEADOW NSW 2292
PHONE: 0249654344 FAX: 0249654322
DX 26217 HAMILTON
surveyor@cmcsurveyors.com.au

LEGEND

ALL SYMBOLS - NOT TO SCALE

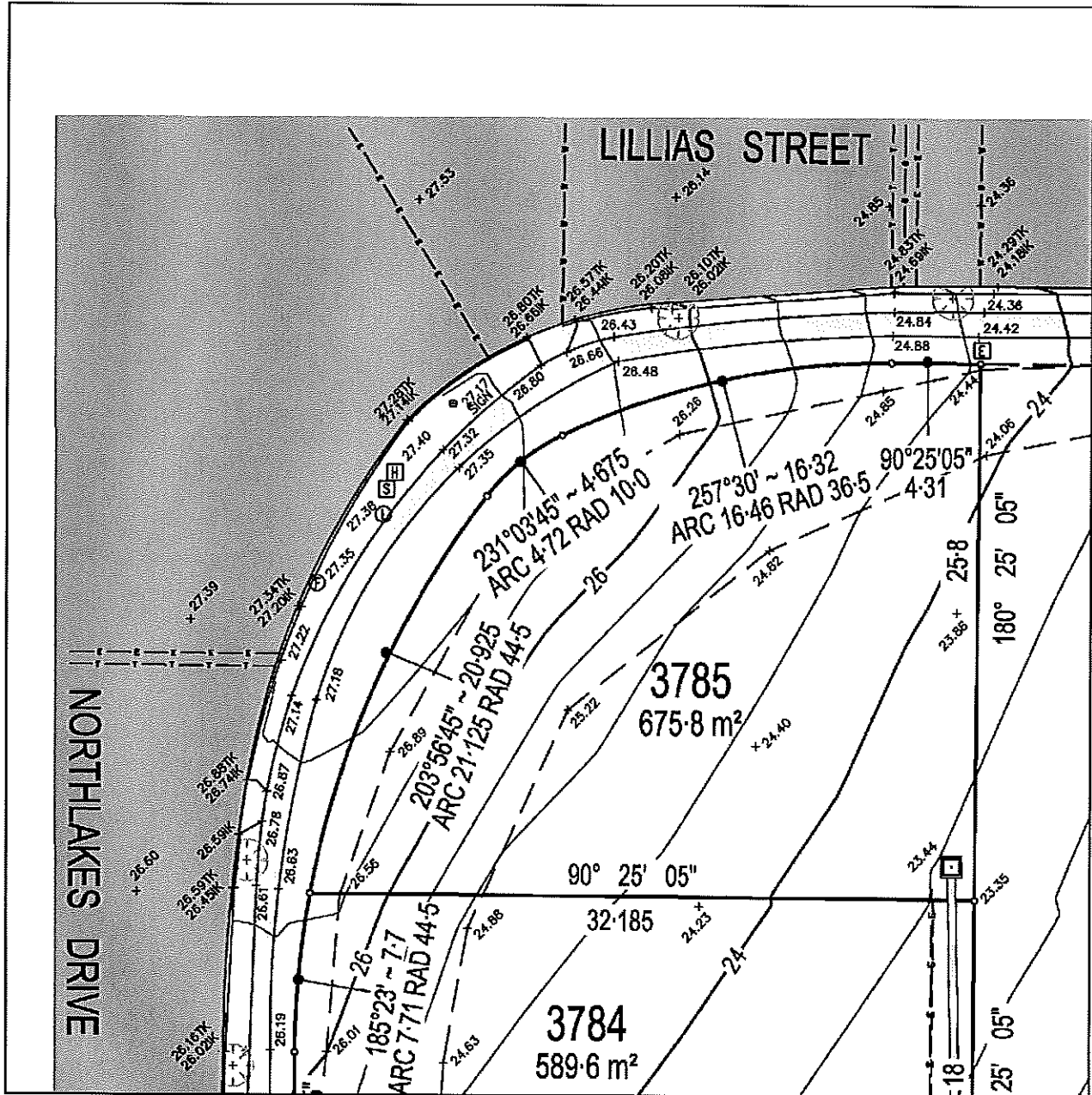
- | | | | |
|---------|-----------------------|---------|--------------------------------|
| [H] | HYDRANT | (S) | SEWER ACCESS CHAMBER |
| [S] | STOP VALVE | [S] | SEWER INSPECTION POINT |
| [T] | TELSTRA | (F) | FLUSHING POINT |
| [E] | UNDERGROUND POWER BOX | [P] | STORMWATER PIT |
| (L) | LIGHT POLE | [K] | KERB INLET PIT |
| -W-W-W- | WATER | -S-S-S- | SEWER |
| -T-T-T- | TELSTRA | [—] | STORMWATER PIPE |
| -E-E-E- | ELECTRICITY | [—] | TOP OF CONC. KERB & GUTTER |
| -G-G-G- | GAS | [---] | APPROX. CENTRELINE OF PAVEMENT |



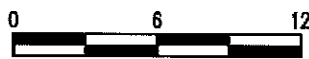
NORTHLAKES

"You're heading in the right direction"

STAGE 37B



LOT 3785 DP



SCALE 1:300

- NOTES - [DATE OF SURVEY : 31/01/2008]

- SERVICES SHOWN HEREON ARE APPROXIMATE ONLY AND SHOULD BE FURTHER INVESTIGATED PRIOR TO ANY EXCAVATION OR ON-SITE CONSTRUCTION.



CASHMERE MARLER & CAVANAGH PTY LTD
CONSULTING SURVEYORS

72 BELFORD STREET BROADMEADOW NSW 2292
PO BOX 176 BROADMEADOW NSW 2292
PHONE: 0249654344 FAX: 0249654322
DX 26217 HAMILTON
surveyor@cmcsurveyors.com.au